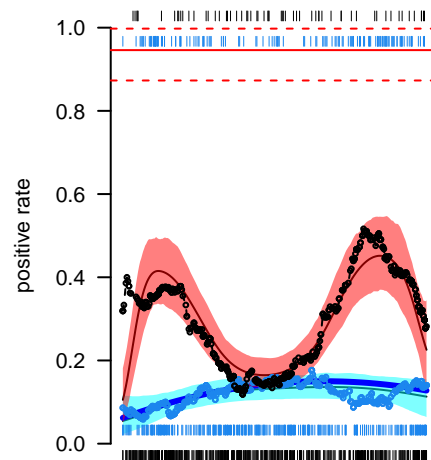
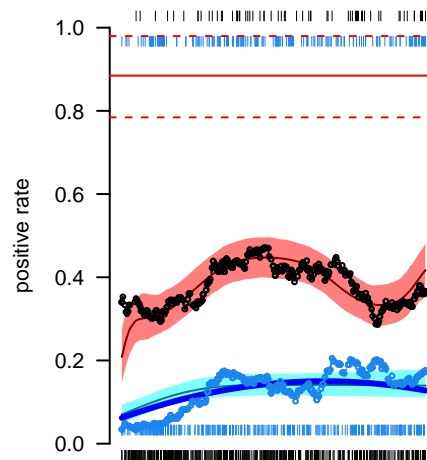


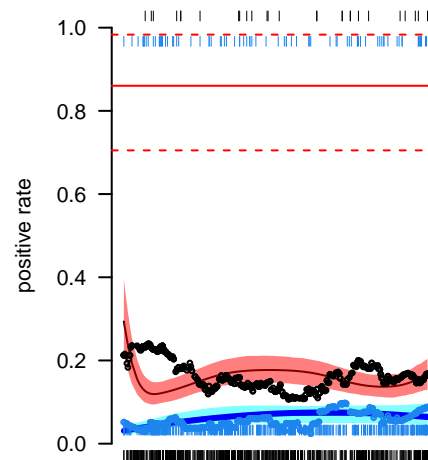
A_MBS1



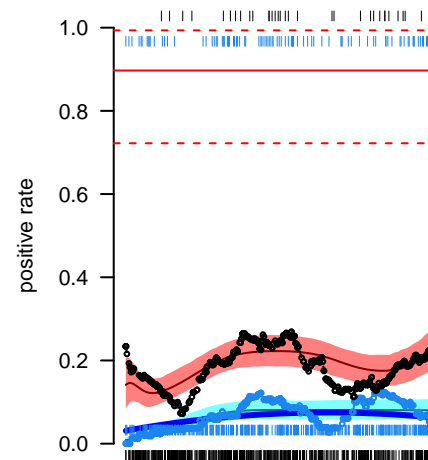
B_MBS1



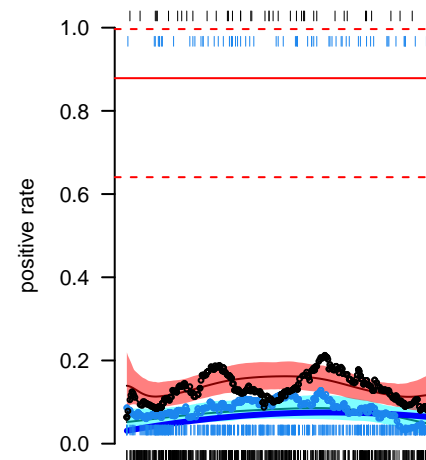
C_MBS1



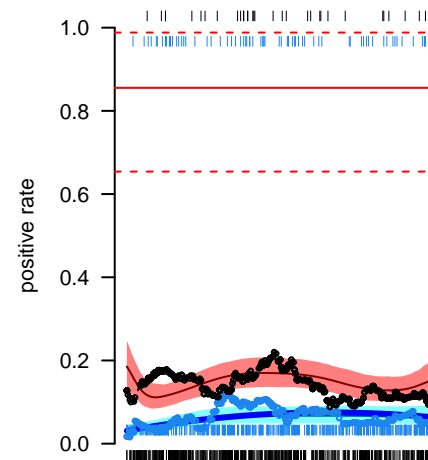
D_MBS1



E_MBS1

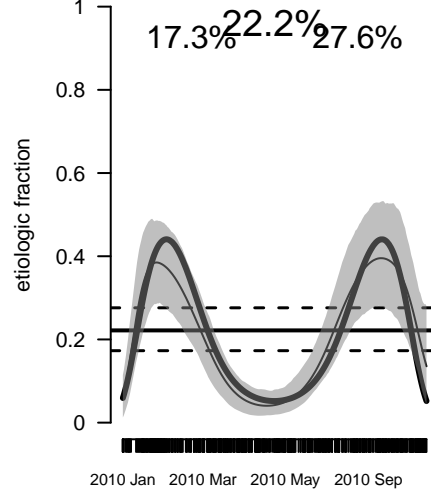


F_MBS1



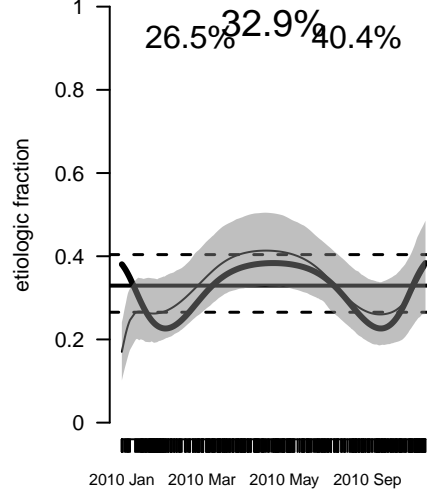
Overall Pie

17.3% 22.2% 27.6%



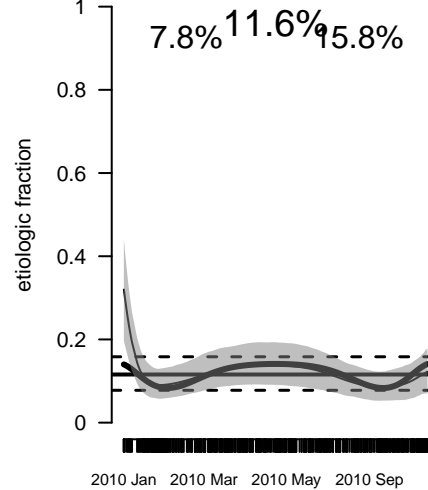
Overall Pie

26.5% 32.9% 40.4%



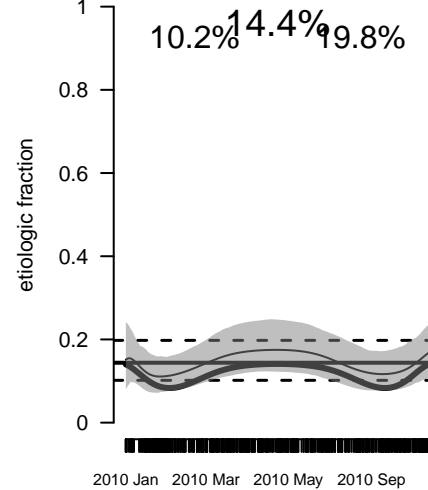
Overall Pie

7.8% 11.6% 15.8%



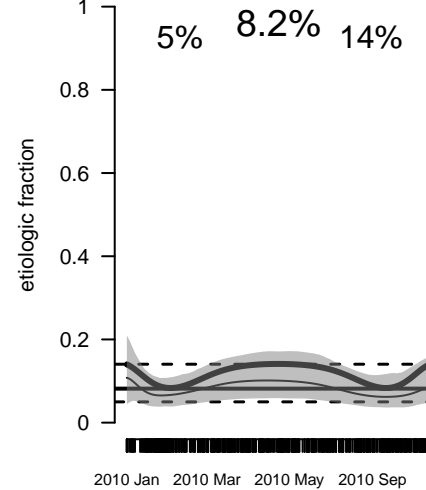
Overall Pie

10.2% 14.4% 19.8%



Overall Pie

5% 8.2% 14%



Overall Pie

7.3% 10.8% 16.2%

