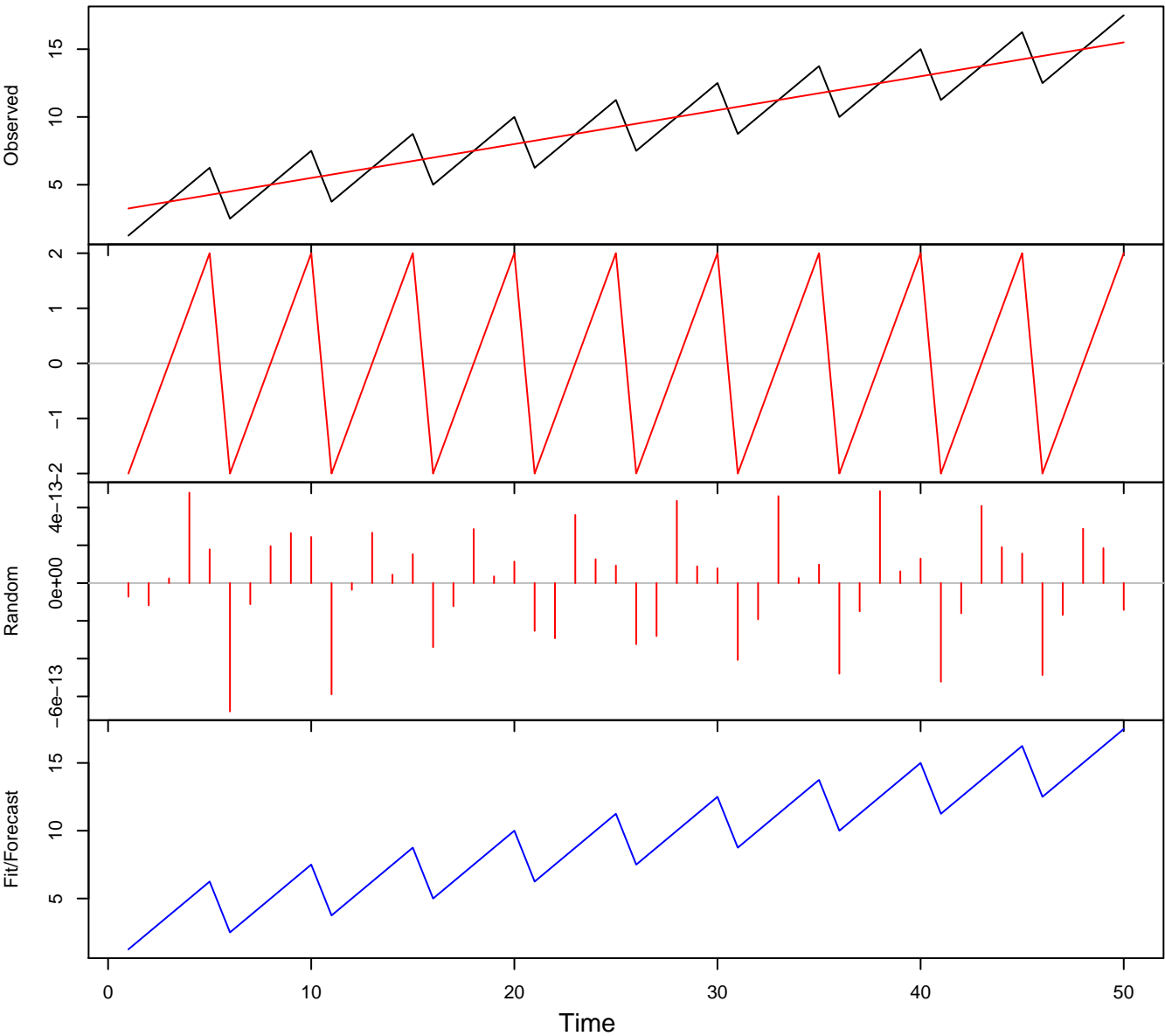
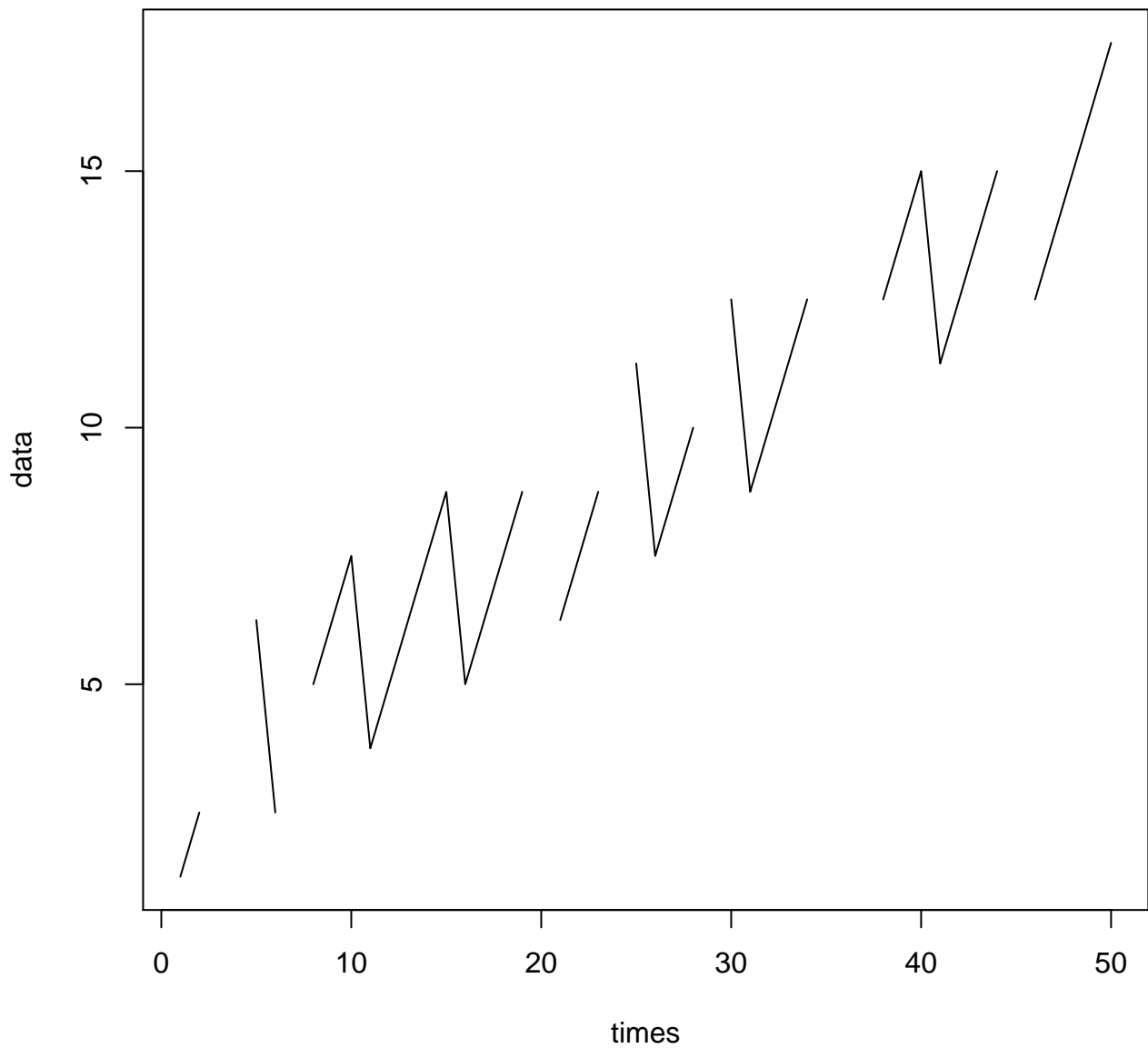


# STR decomposition

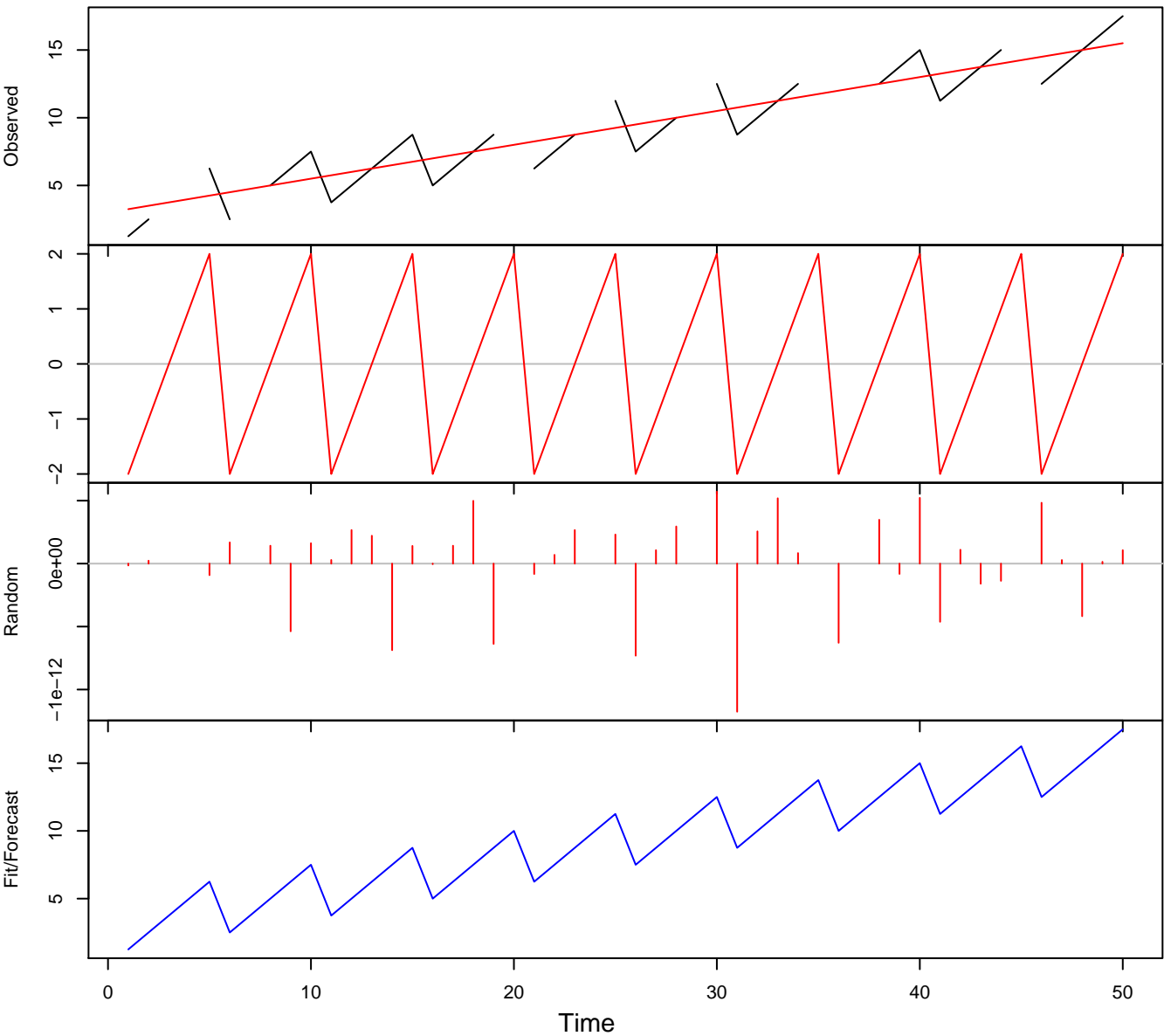
Lambdas = (1,0,0) (10,0,0)

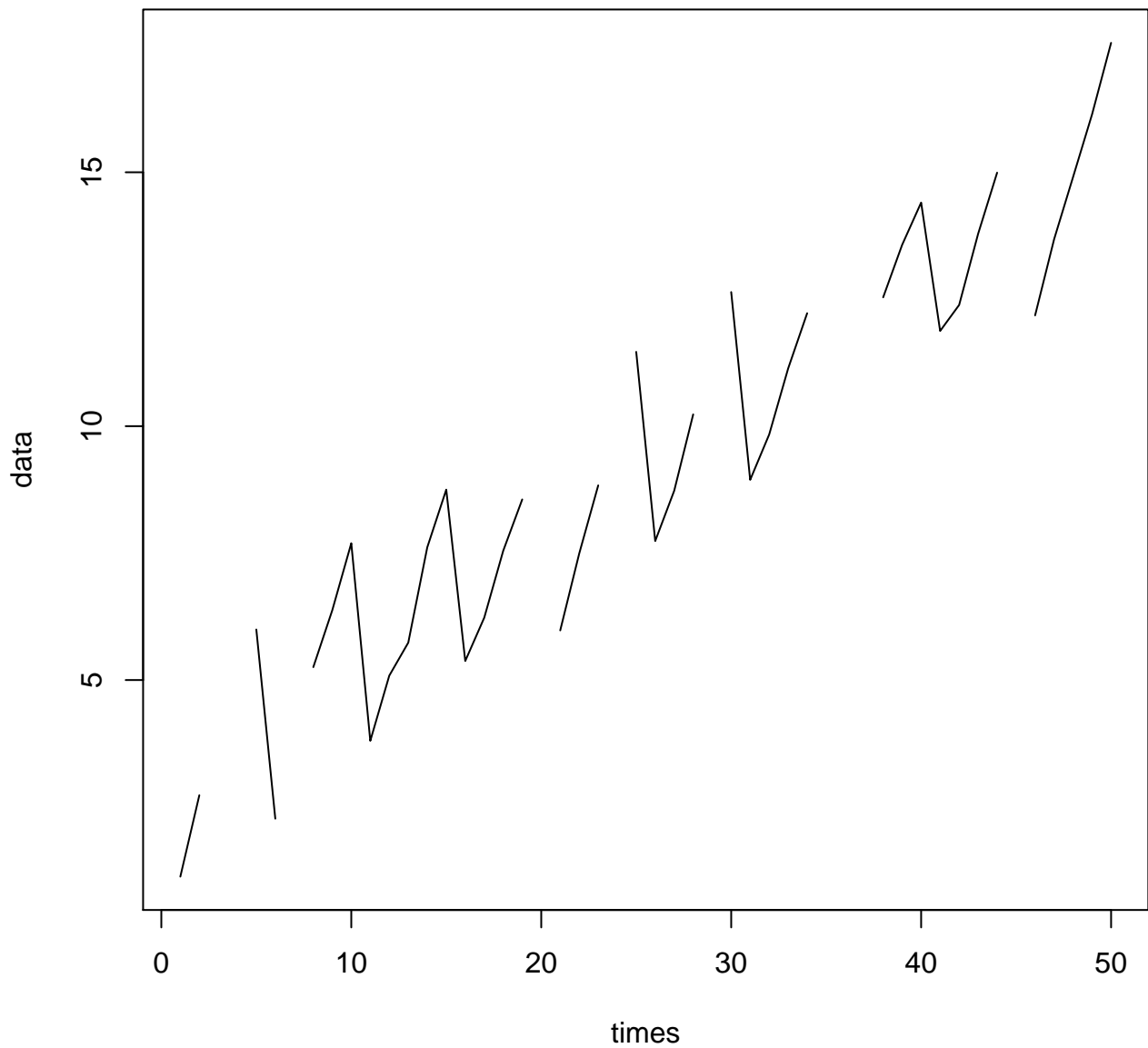




# STR decomposition

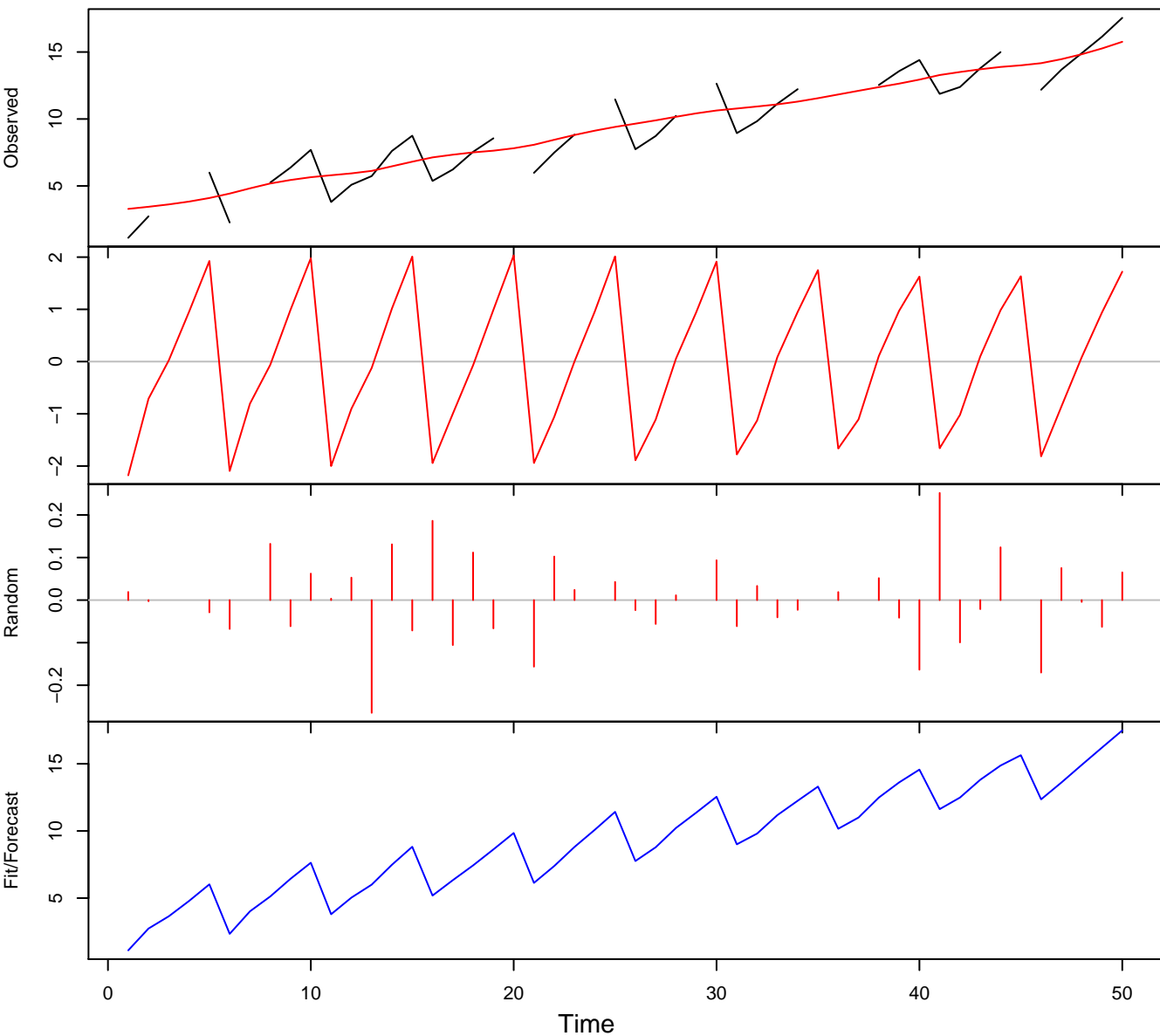
Lambdas = (1,0,0) (10,0,0)





# STR decomposition

Lambdas = (1,0,0) (10,0,0)



# STR decomposition

LOO MSE = 0.247, Lambdas = (1,0,0) (10,0,0)

