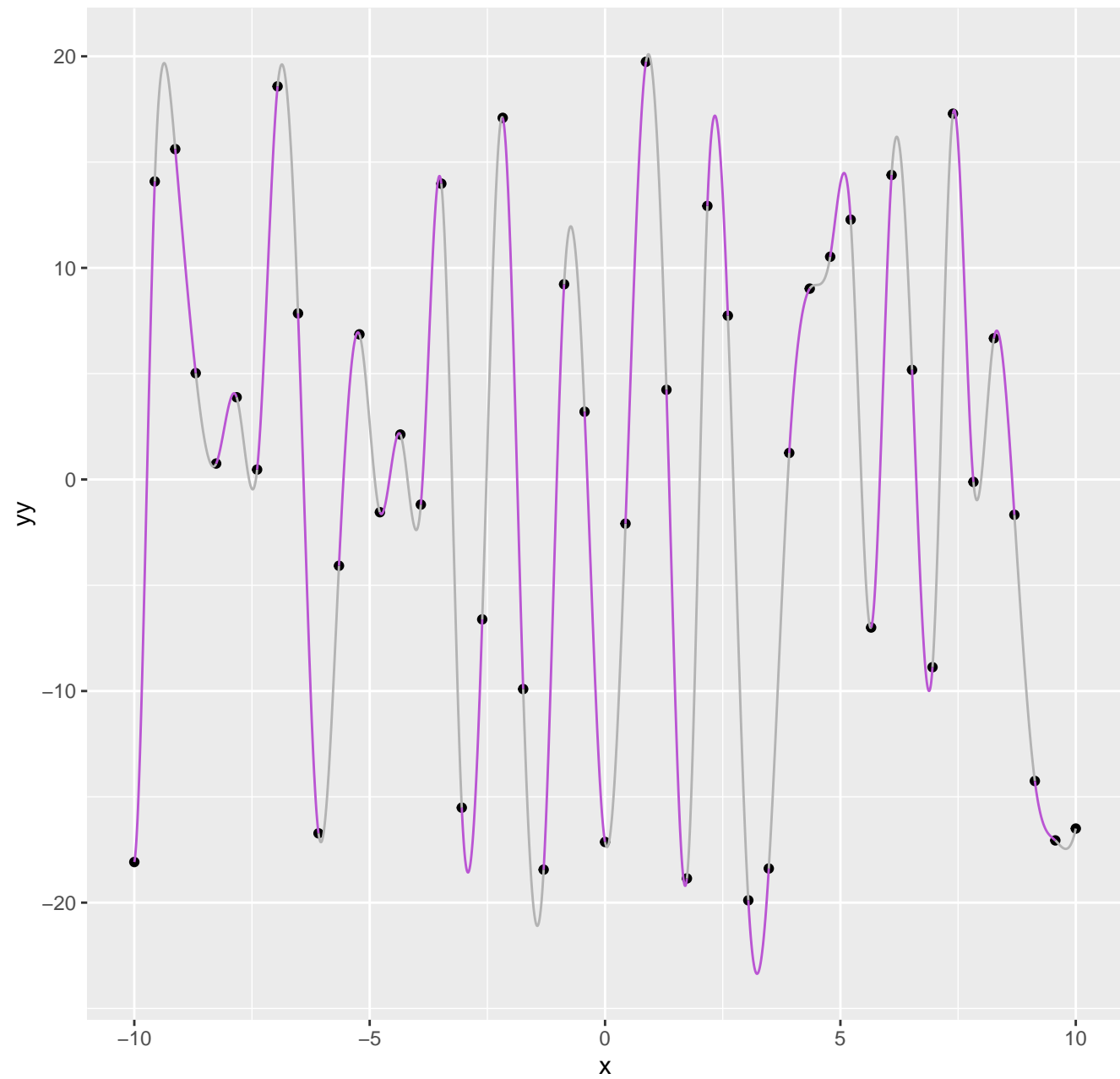
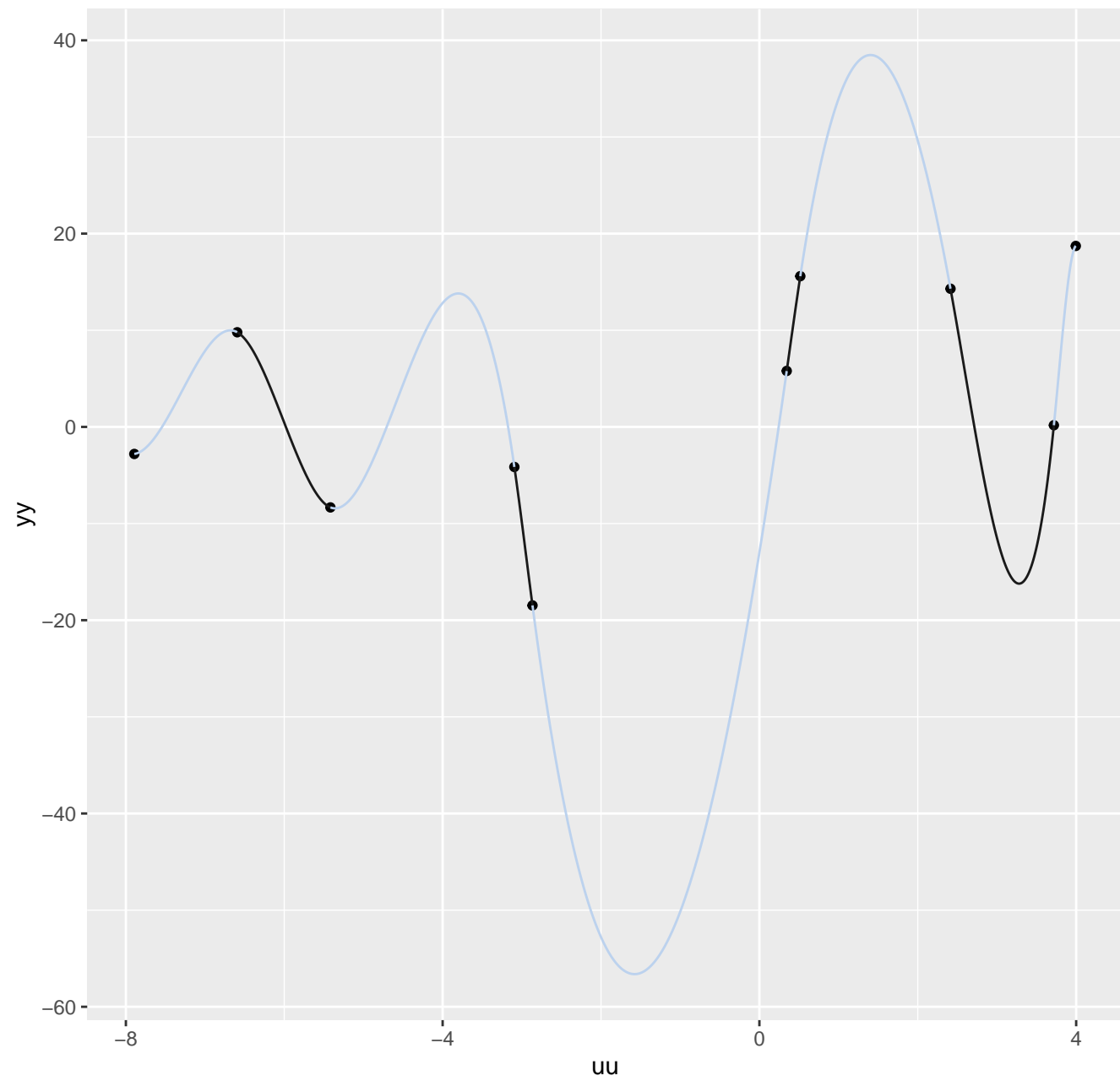


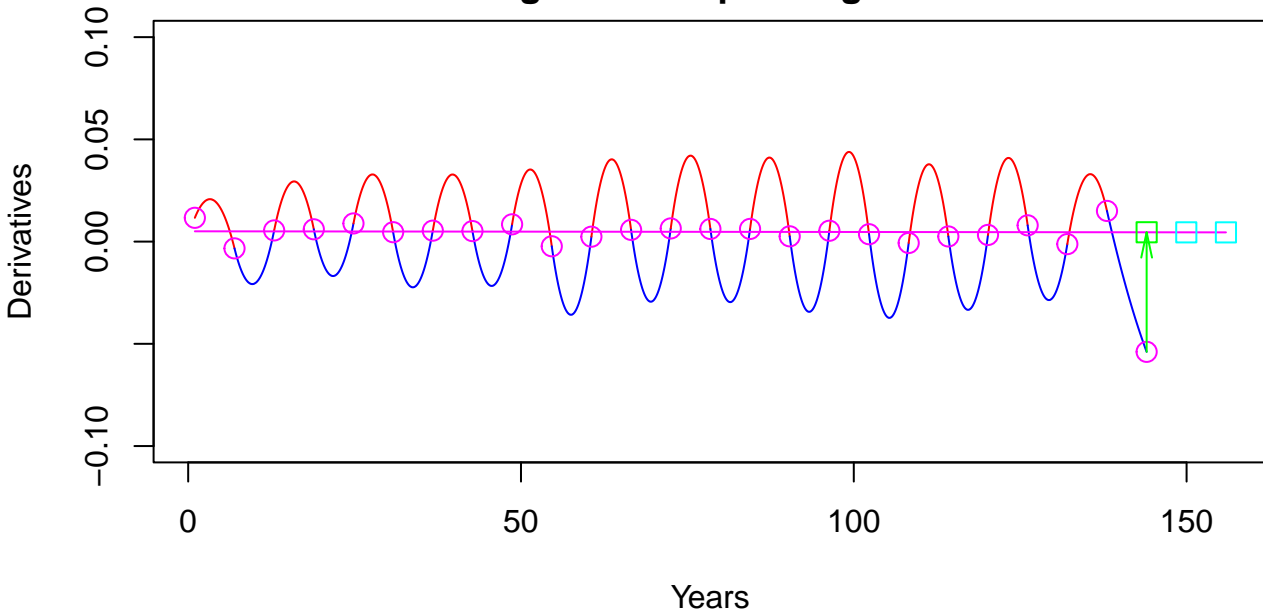
46-component uniform interpolation spline



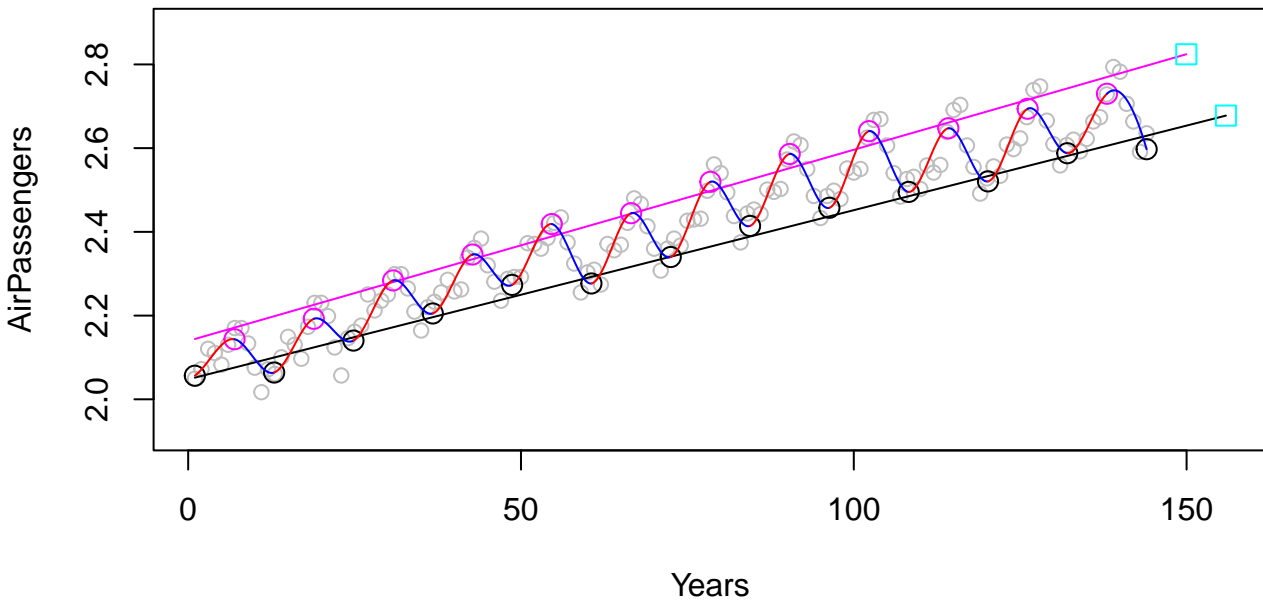
9-component non-uniform interpolation spline



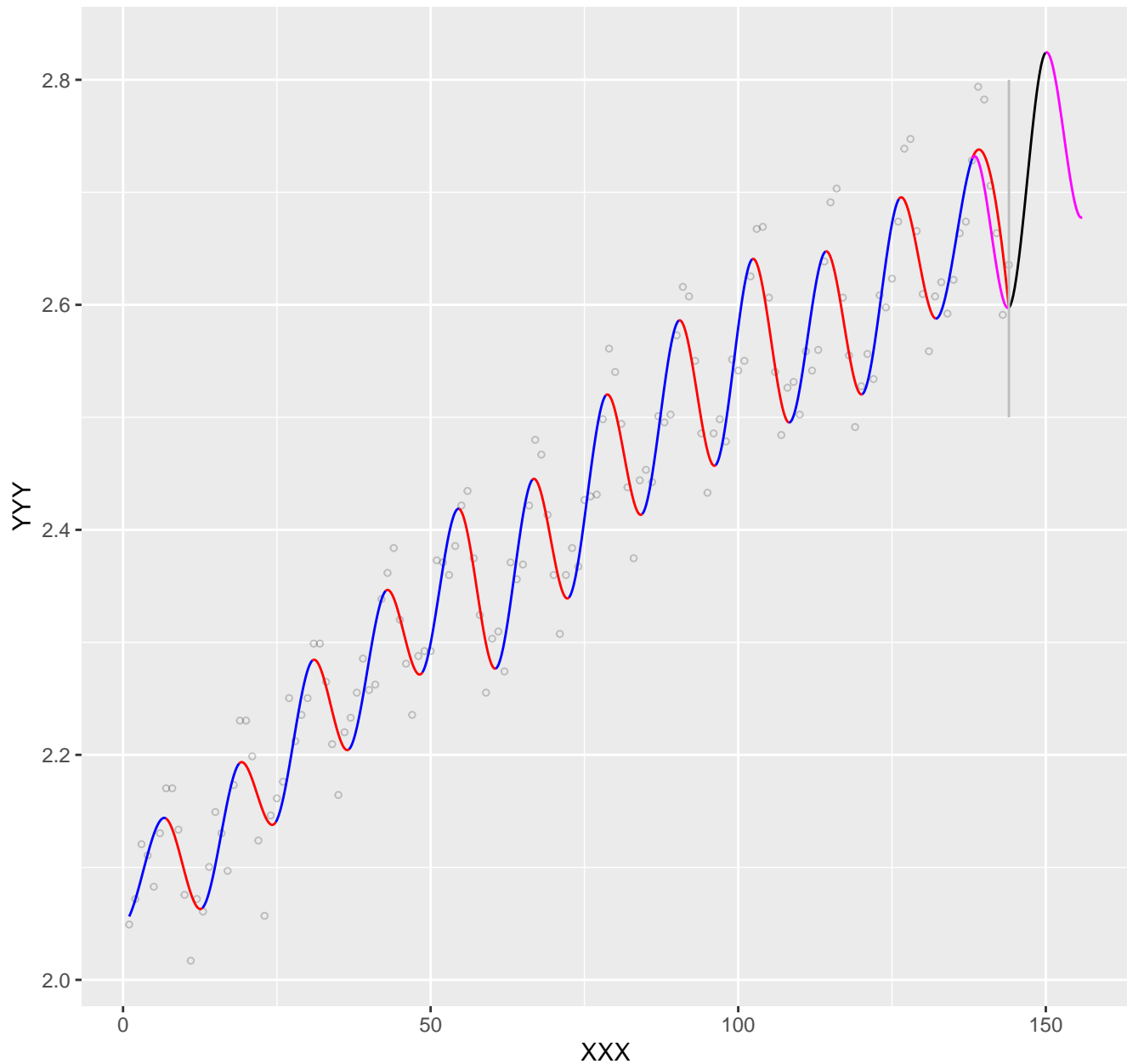
Correcting and extrapolating derivatives



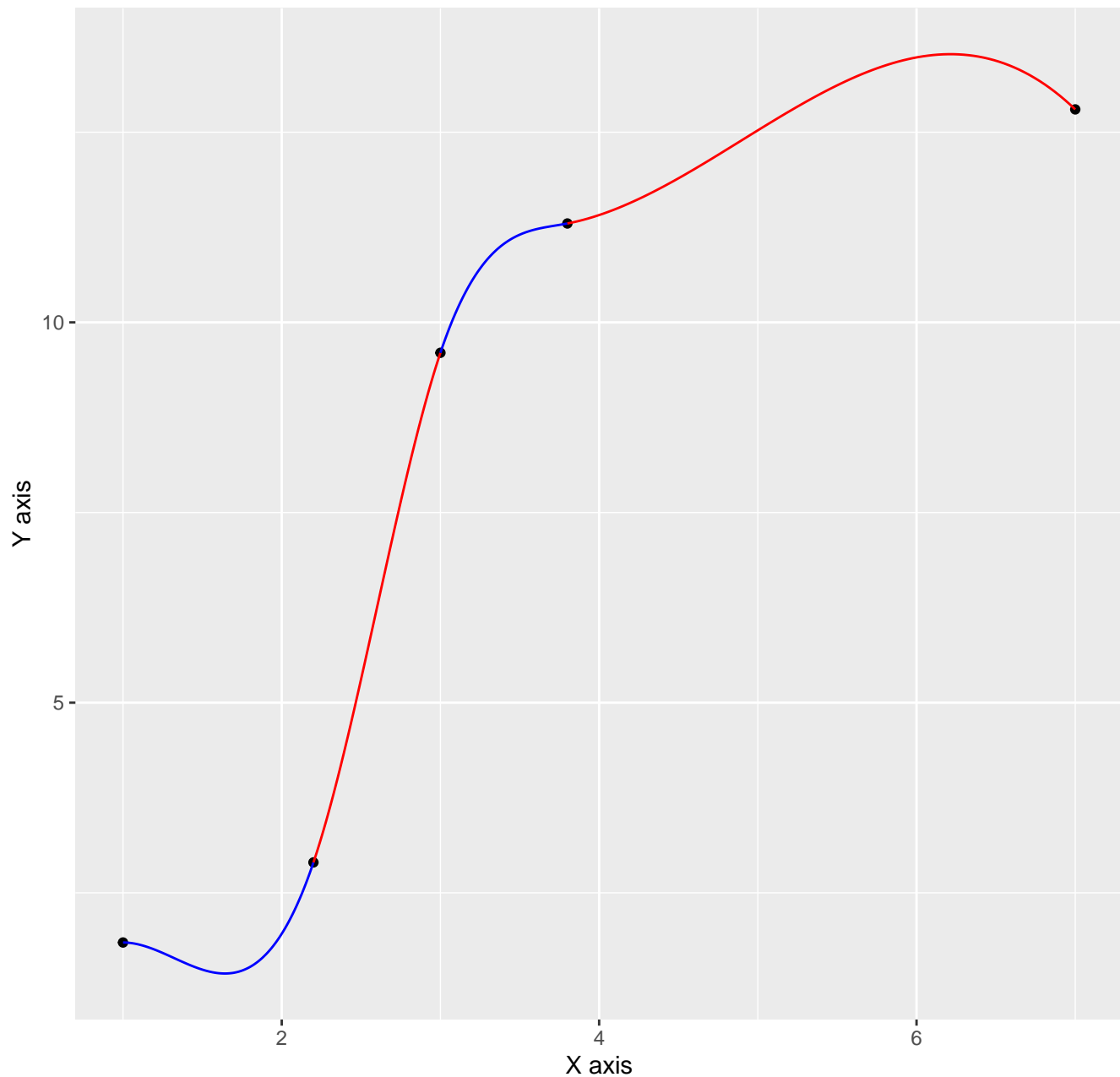
Extrapolating upper and bottom function values



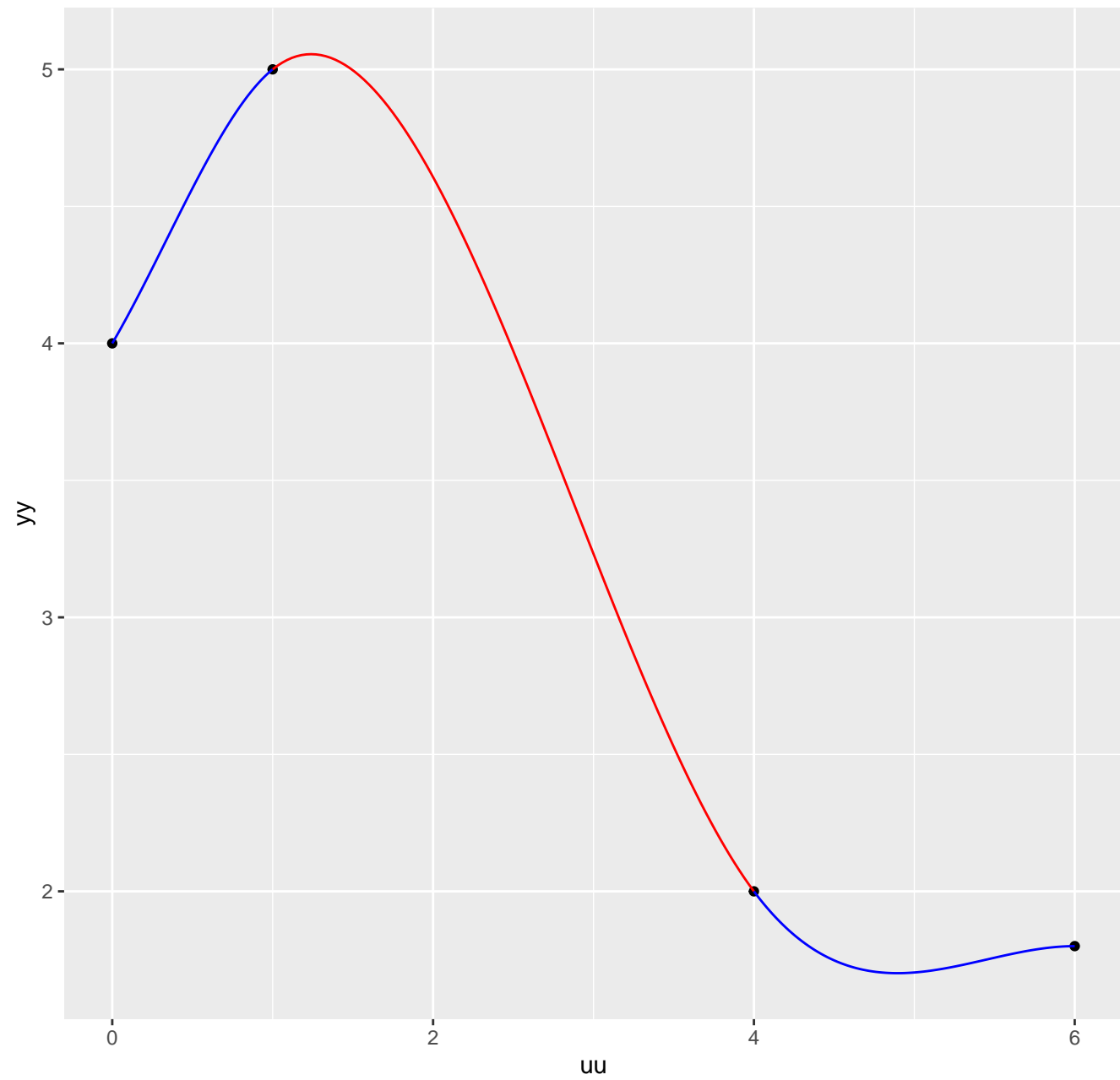
Smoothing log(AirPassengers) with a 24-component uniform CICS, corrected last segment and two forecasting segments



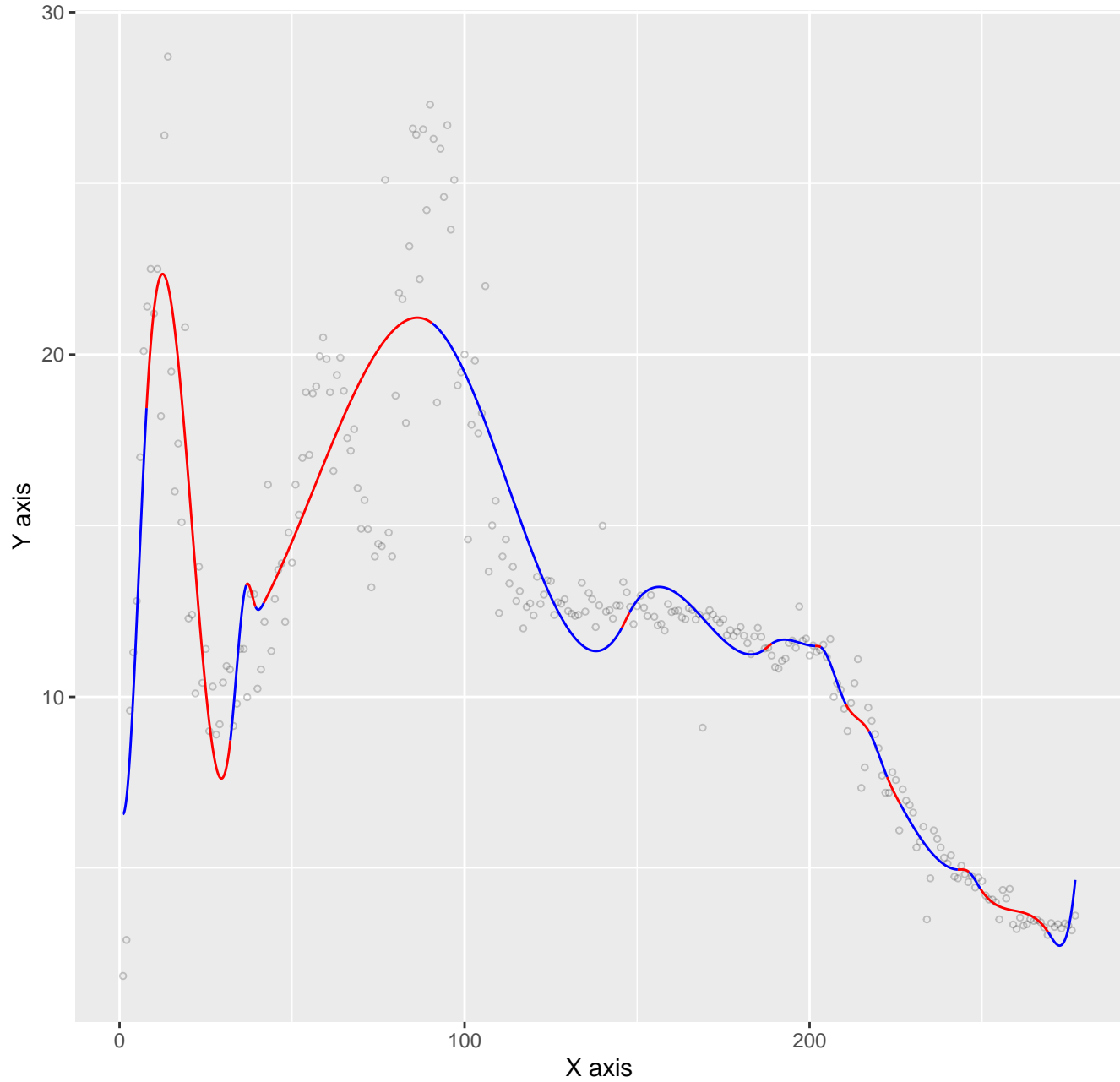
4-component non-uniform interpolation spline



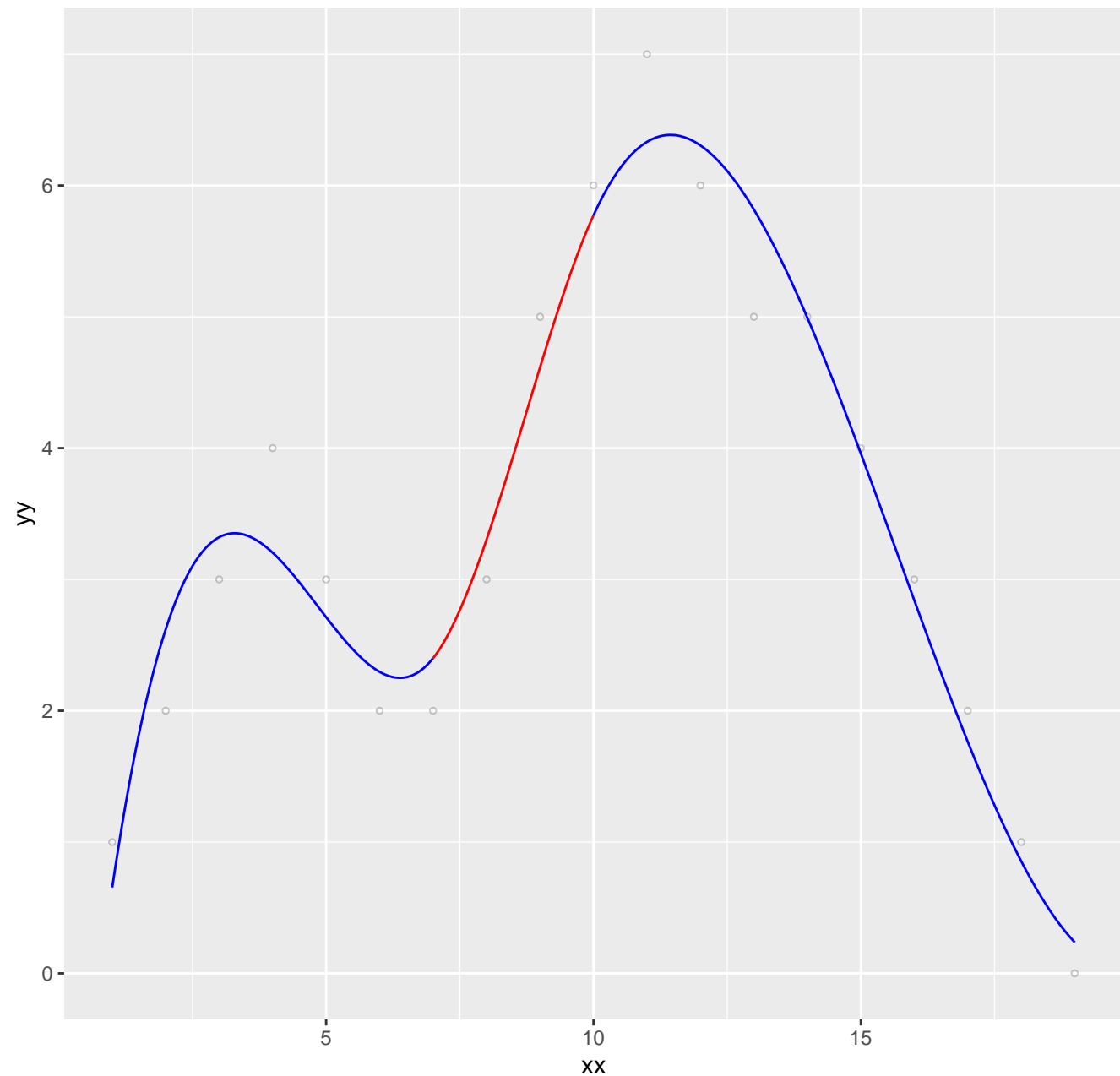
3-component non-uniform interpolation spline



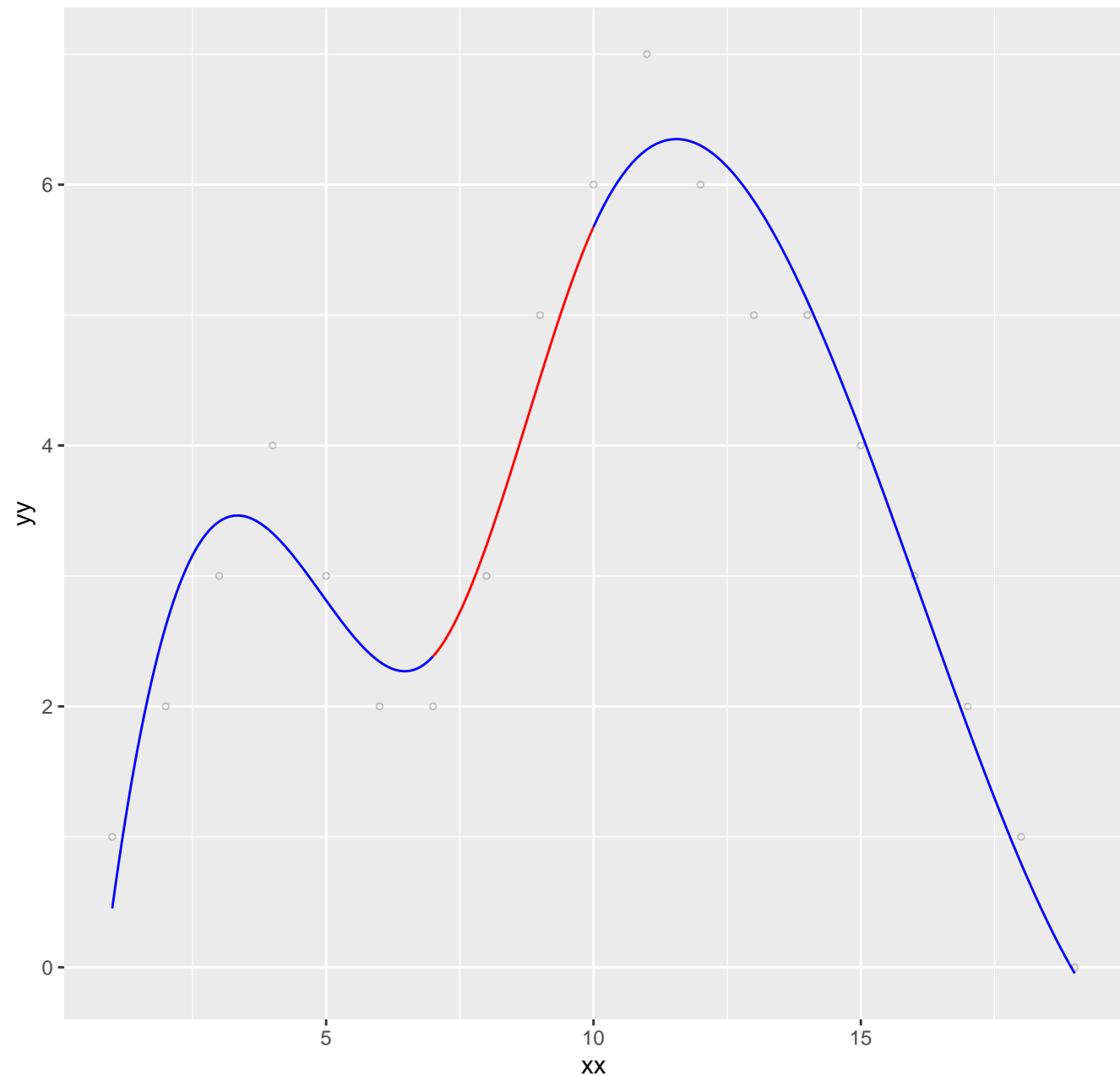
Smoothing with a 21-component non-uniform interpolation spline



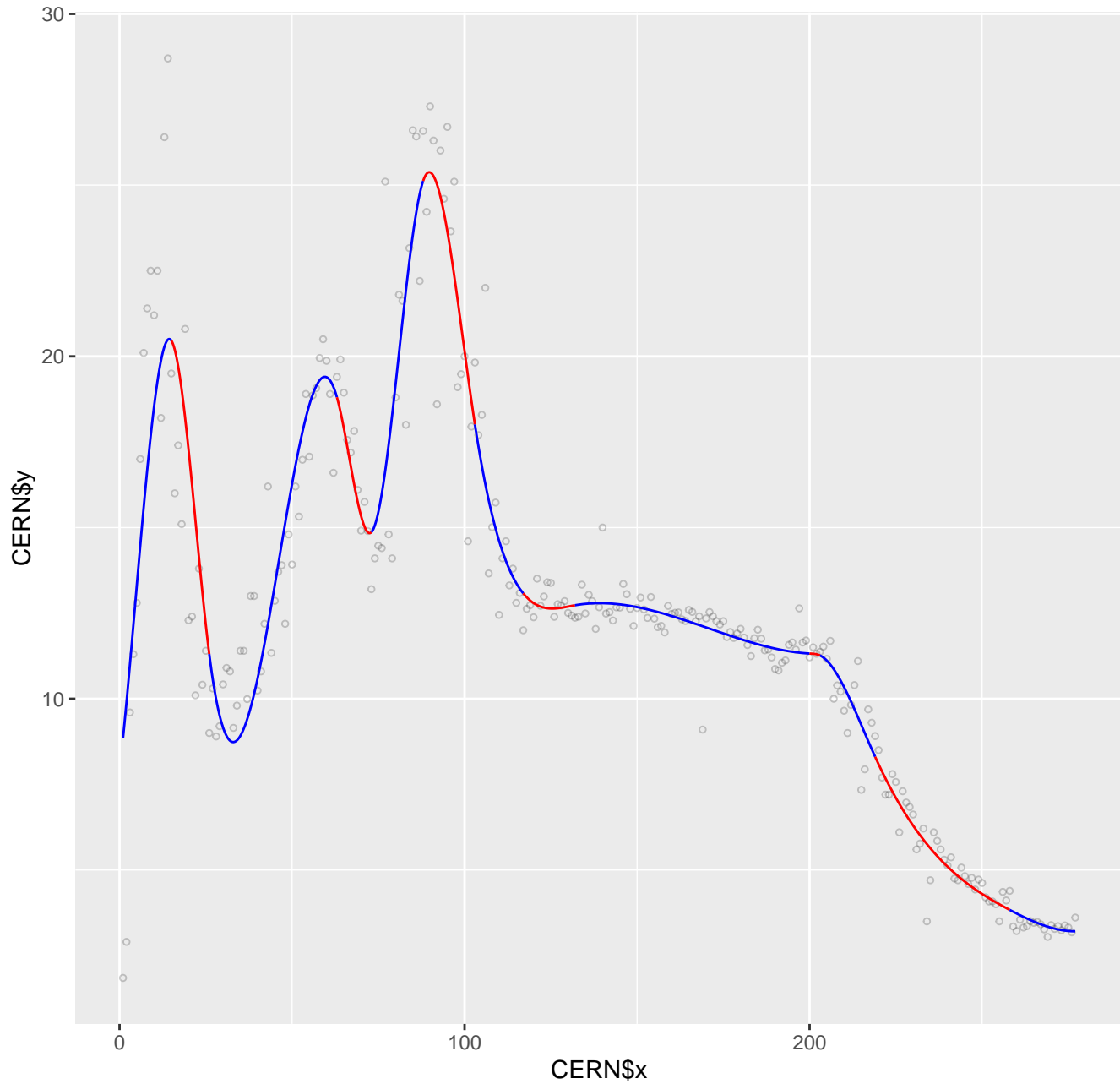
Smoothing with a 3-component non-uniform interpolation spline



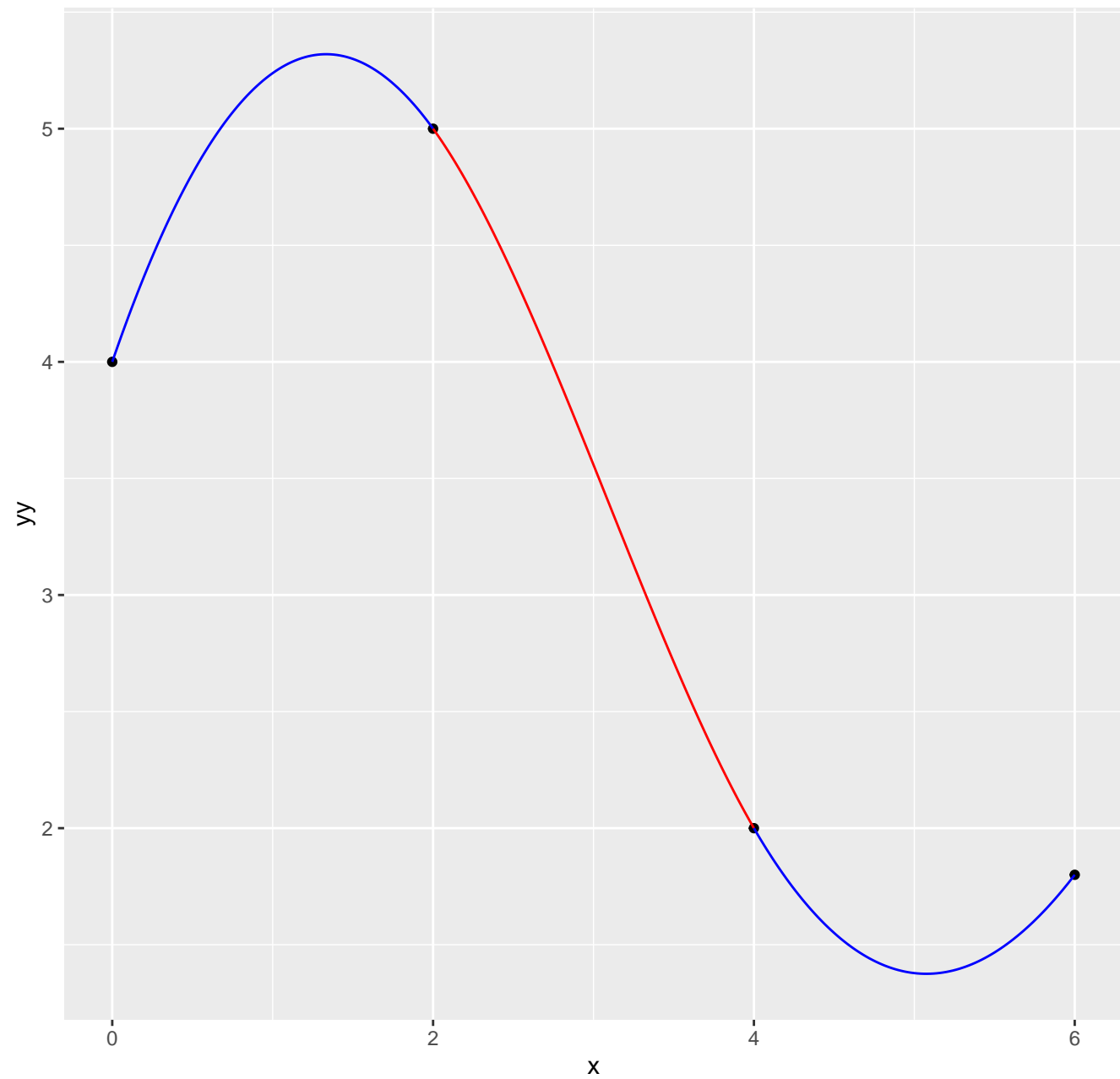
Smoothing with a 3-component non-uniform interpolation spline



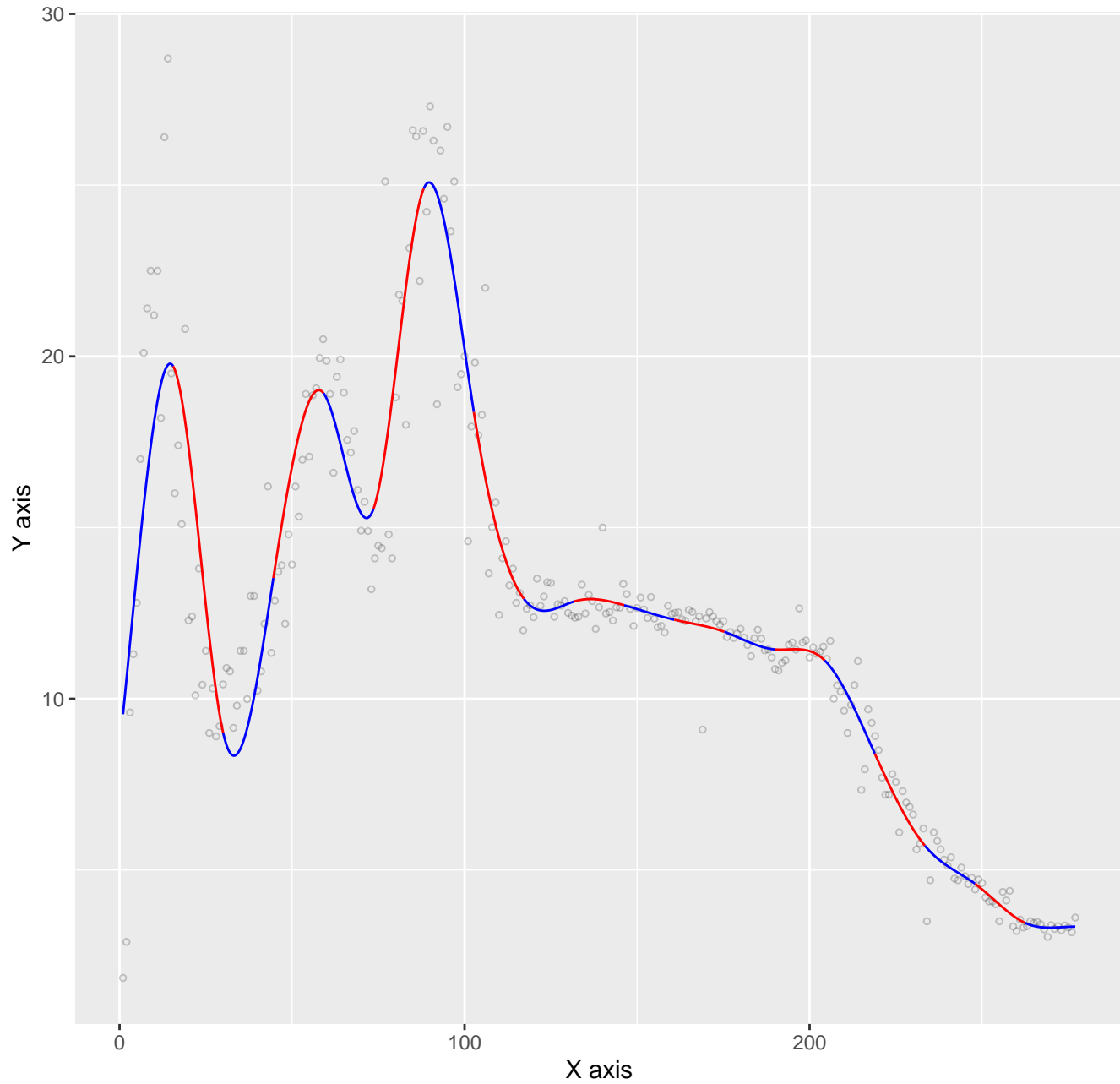
Smoothing with a 13-component non-uniform interpolation spline



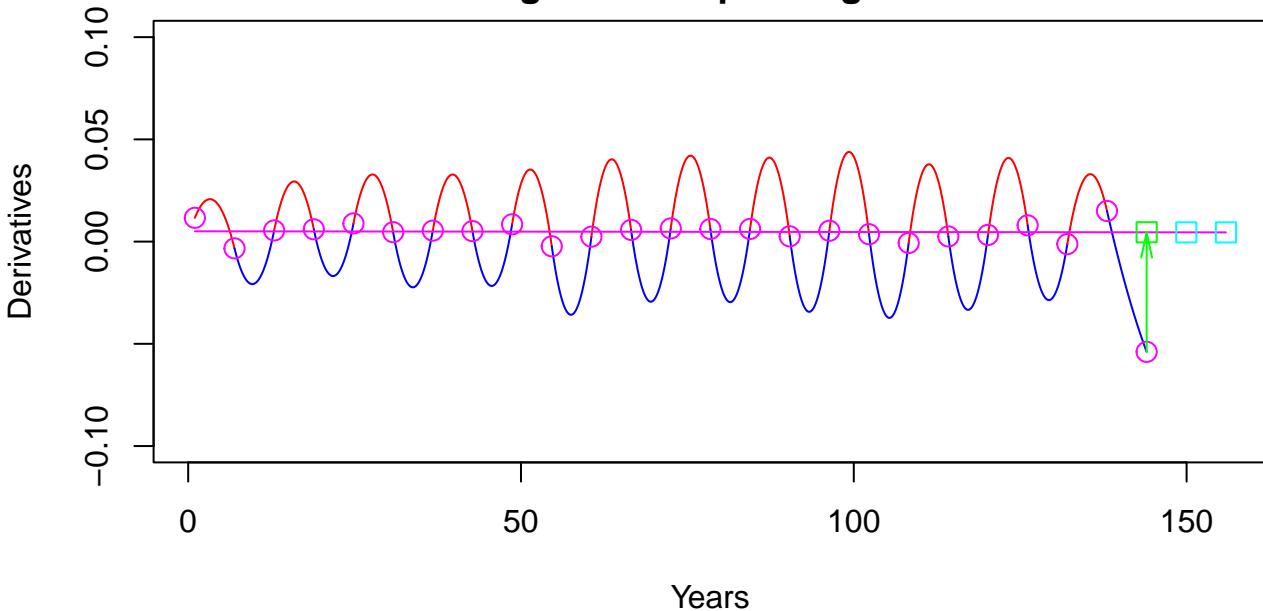
3-component uniform interpolation spline



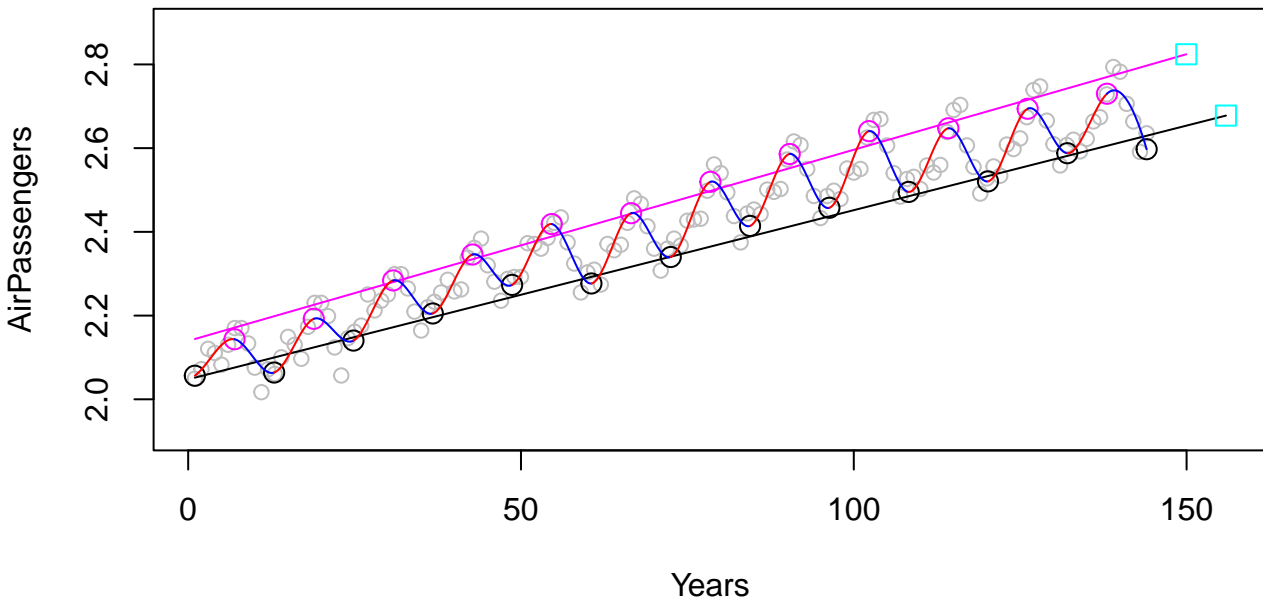
Smoothing with a 19-component uniform interpolation spline



Correcting and extrapolating derivatives



Extrapolating upper and bottom function values



Smoothing $\log(\text{AirPassengers})$ with a 24-component uniform CICS, corrected last segment and two forecasting segments

